

# Downloading CuVee Software Programs

## into File-based Apps

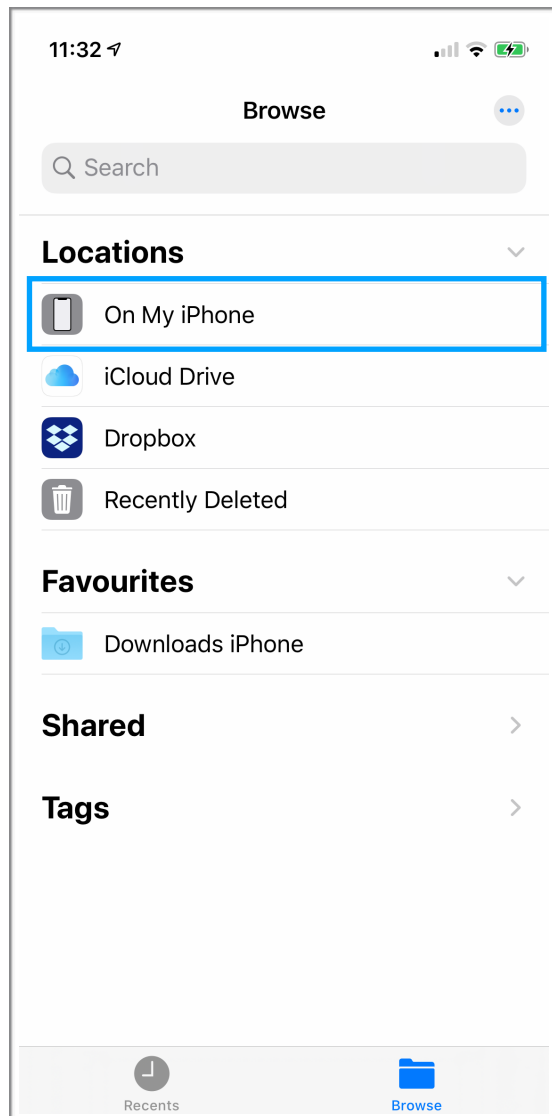
(RPN-25, -32, -34, -38, -55)

The walk-through below assumes that you've set **Safari's Downloads folder** to your *iPhone*. The steps are essentially the same if you prefer *iCloud Drive* (which has the advantage that the files will be accessible from any of your devices.)

To define the **location** of the Downloads folder:

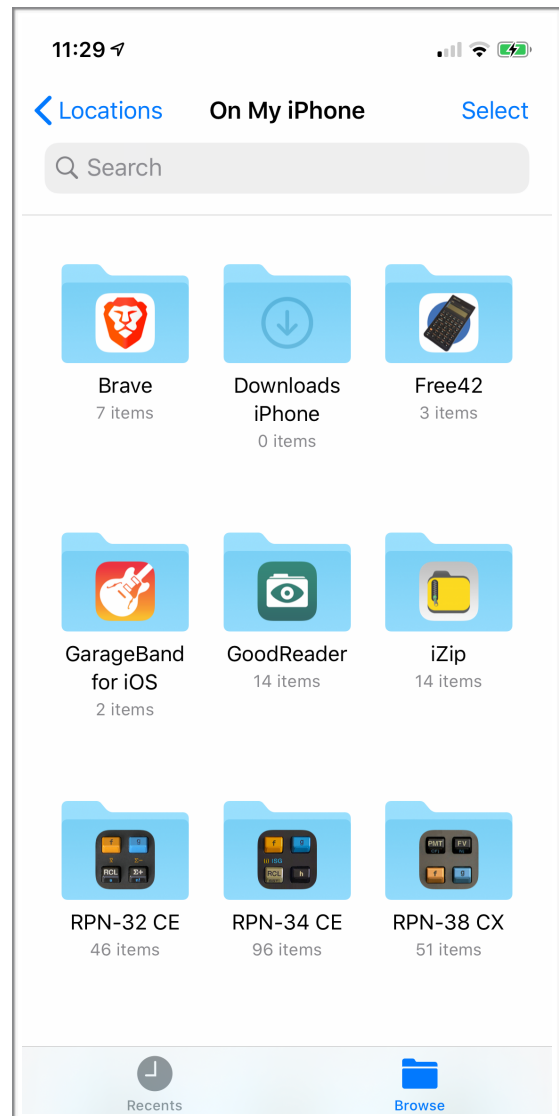
- Go to *Settings > Safari > Downloads* and check your download location.
- Choose *On My iPhone* for this walk-through.

In the **Files app**, tap *On My iPhone*



You see known **file destinations**.

Note that you can **rename** the **Downloads folder** by long-pressing on it. Similarly, you can make it appear in the section **Favourites** (*image left*).



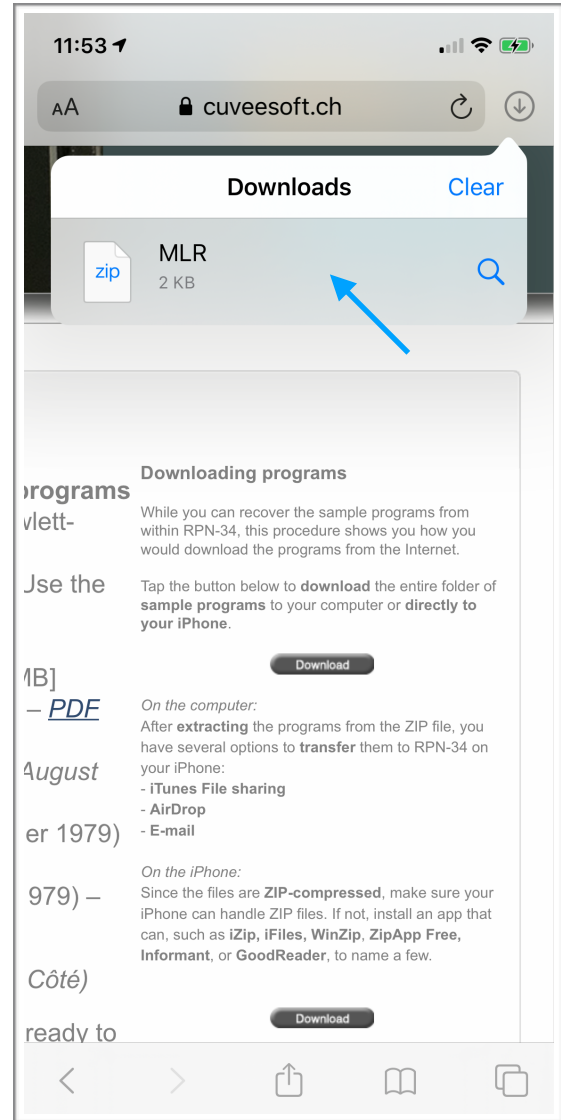
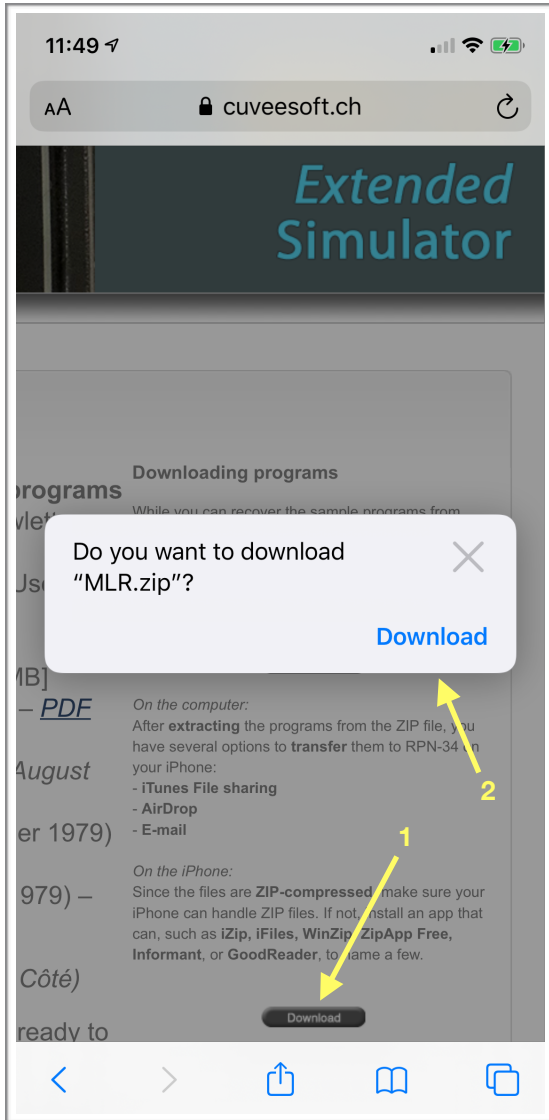
## The Task

On your iPhone, download the program „**Multiple Linear Regression**“ – found on the **Library** page of the RPN-34 website (<https://www.cuveesoft.ch/rpn34/p5.html>) – into **RPN-34 CE**.

On the web page in Safari, tap the **Download** button. Then confirm by tapping **Download** in the dialog.

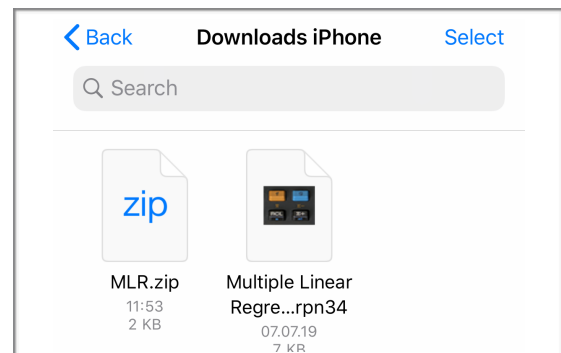
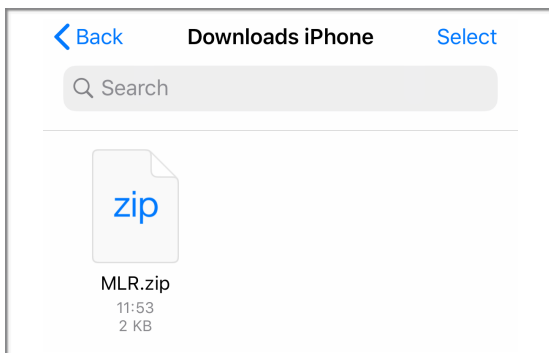
Then tap **Safari's download button** in the top-right corner.

Tap the area showing the **zip file MLR**:



You're taken to the **Downloads** folder:

Tap the zip file to **uncompress** it.



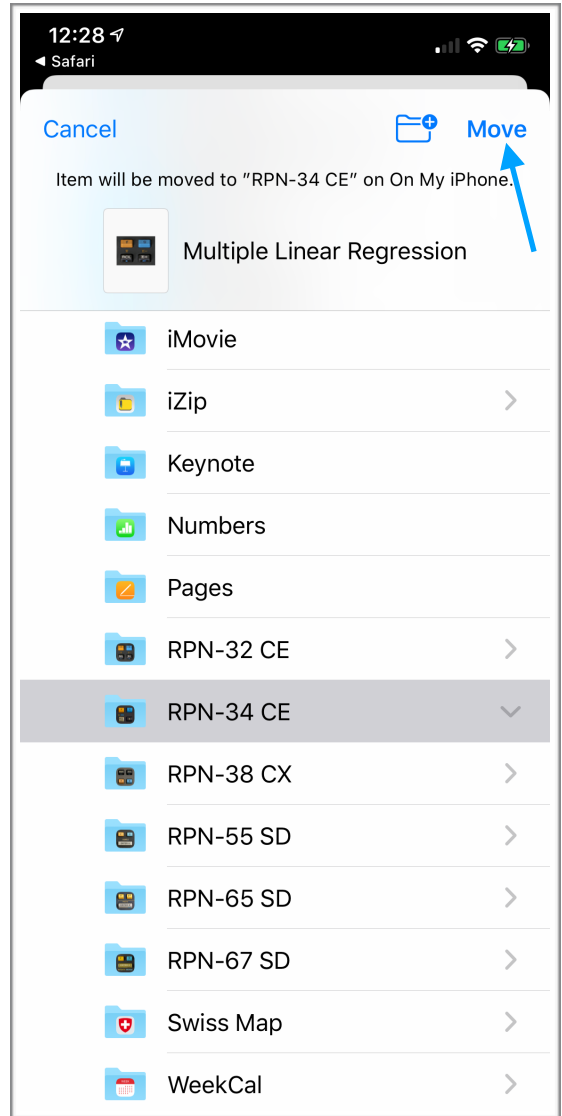
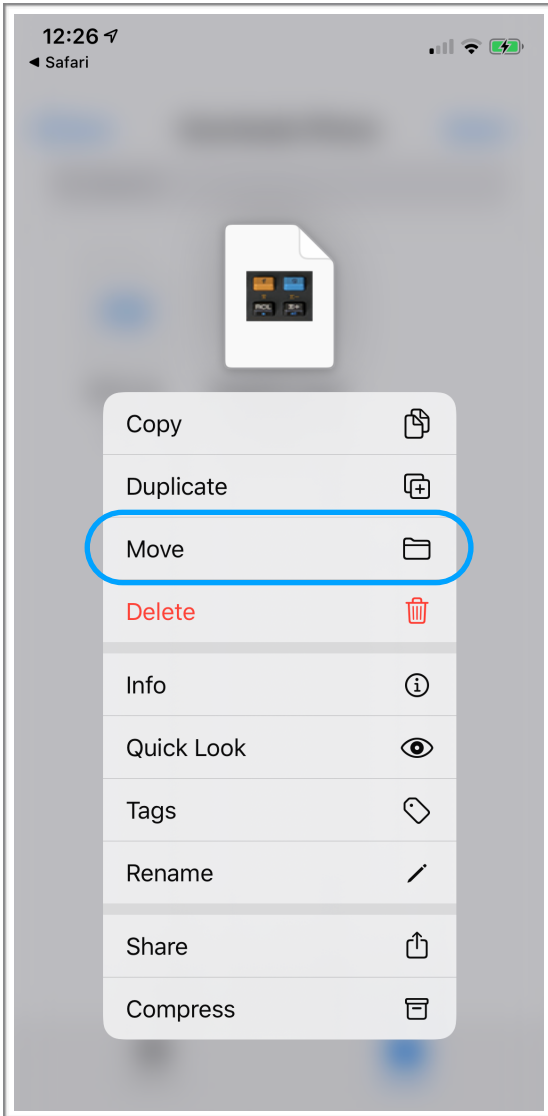
**Note:**

At this point, you may – as an **alternative method** – *long-press* the unzipped file, then choose *Share*, then *Mail* to email it to yourself. After receiving the email, tap the icon in the message to import the program.

In this walk-through, we’re going to **move** the unzipped file directly to **RPN-34 CE’s documents** folder.

We do this by **long-pressing** the file, then choosing **Move**.

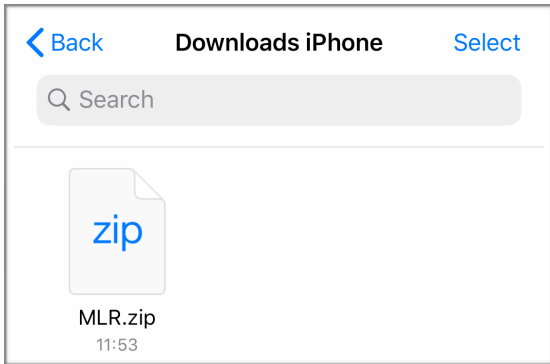
Destinations for the move are presented. Select **RPN-34 CE**, then tap **Move** (top-right).



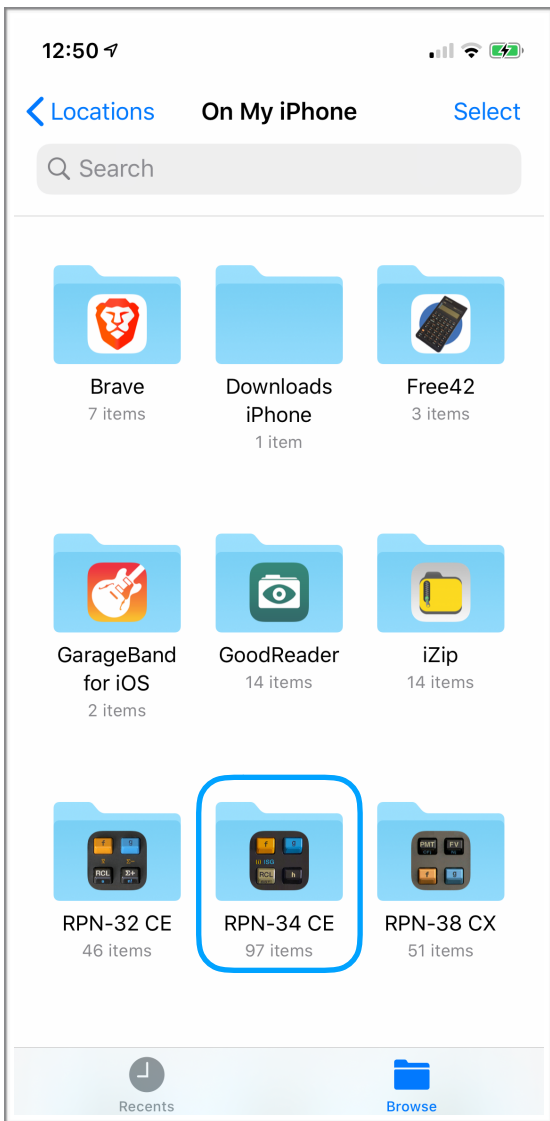
*We're done!*

The program file is now part of **RPN-34 CE’s program collection**.

To verify, tap the **Back** button.  
Note that the moved file is gone.



Tap the **RPN-34 CE** folder to open it:



You'll see all of **RPN-34 CE's** programs.  
Tap any file to open the calculator.

